

The Xtend range of Antistain haze and stain removers are the only choice for the complete elimination of undesirable diazo, ink and stencil residues which are locked in the knuckles and weave of your mesh. Antistain products are engineered to encapsulate the fabric, breaking down all stains, and returning the mesh to like-new condition.

Antistain Ultra

A two-part system used with any Xtend Screen Cleaner or Antistain Cream. The most effective ink and stencil stain remover on the market, Antistain Ultra is designed to be easy to use, and will clean all ink, diazo and pigment stains:

- Removes all ink, diazo and pigment stains from the mesh
- Gel structure for non-drip application and enhanced performance
- Non-aggressive formulation has no detrimental effect on synthetic mesh, no matter how long left on the screen

Antistain Cream

Used in conjunction with Antistain Ultra, ensures even the toughest stains are cleaned

- Patented non-caustic chemistry
- Easy to apply brushable formula

Antistain Gel XL NEW

A one part solvent-based alkaline gel, which removes all types of stains from mesh

- Single component, ready to use product
- Fast acting, and excellent cleaning power
- Removes ghost image stains caused by residual ink, emulsion or capillary film

Antistain Paste

An alkaline cleaning paste which removes ink and stencil residues and prepares screens for all types of stencils

- Fast acting stain removal system
- Cleans all ink and diazo stains when used with any Xtend Screen Cleaner



Screen Gel Clear

Used immediately after the end of a print run, Screen Gel Clear is a slow-drying, solvent-based gel which reduces stains further down the screen reclaiming process.

- Viscosity allows easy application using a coating trough
- Gel structure prevents ink from drying or curing in mesh prior to reclaiming process
- Reduces mesh staining

Preventative measures to reduce mesh staining

Following certain procedures during and after the printing process can help to reduce, or even eliminate, the amount of mesh staining you experience in your workshop. These include:

- Ensure diazo based emulsions are fully cured as underexposure will create diazo stains.
- Avoid the use of aggressive solvents on-press, as these may aggravate staining and create problems further down the line in the screen reclaiming area.
- Do not allow inks to dry or cure in the screen prior to the reclaiming process. The use of Screen Gel Clear will assist where there is delay between the end of a job and reclaiming.
- Use only good quality solvents, such as those from the Xtend Screen Cleaner range. Some aggressive solvents will effectively "lock" ink into the mesh, creating worse staining problems.
- When recirculating solvent, regularly replace or distill dirty solvent.

Stain removal made easy!



Gone!

Fast removal of ink and stencil stains

NEW

Single Part System

Antistain Gel XL

'Wet-on-wet' application

Two Part System

Antistain Paste & Xtend Screen Cleaner



Apply to both sides of the wet screen with a coating trough or brush.



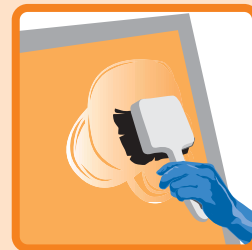
Leave to activate for up to 10 minutes.*



Rinse screen with low pressure water.



Pressure wash both sides of screen to remove stains.



Apply any Xtend Screen Cleaner onto screen.



Add Antistain Paste to both sides of the mesh, mixing the two products with a soft brush.



Allow to stand for 15 minutes.*



Rinse screen with low pressure water.



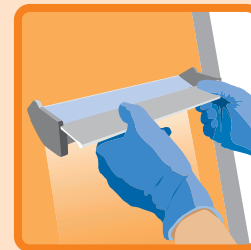
Pressure wash both sides of screen to remove stains.

Removal of toughest ink and stencil stains

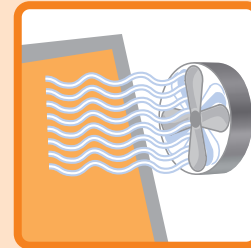
'Wet-on-dry' application

Antistain Ultra

& Xtend Screen Cleaner/Antistain Cream



Trough or brush Antistain Ultra onto both sides of the mesh. For optimum performance, the screen should be dry before application



Allow screen to thoroughly dry. A cold air fan will speed up drying and improve stain removal.



Thoroughly brush any Xtend Screen Cleaner directly over dried Antistain Ultra on both sides of the screen. Alternatively, apply Antistain Cream in the same way to remove the toughest stains



Xtend Screen Cleaner:
Leave 2-3 minutes to react.



Antistain Cream:
Leave up to 30 minutes to react.



Pressure wash both sides of screen to remove all trace of haze and stains.

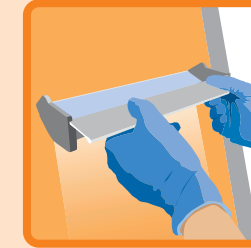
Stain Prevention

'Post-Print' application

Screen Gel Clear



Immediately after print run, remove excess ink residue from screen.



Apply preferably with a trough to ensure even coating. This will prevent remaining ink from drying or curing until ready for reclaiming.



Can be left on screen for up to 12 hours.



Hose off with water, and reclaim screen as normal.

* Longer periods than those recommended can be detrimental to synthetic mesh.

XTEND
Screen Recovery System